

Summer 2025



Mission: The Grays Harbor Early Learning Coalition promotes early learning as a community priority to ensure success in school, work and life.

what we do...

- Develop long-term early learning strategies, annual budgets, and work plans.
- Host and support community training and events.
- Coordinate grant proposals.
- Provide forums for information sharing, partnership, and collaboration.

Membership is free! Become a member to:

- Network.
- Stay informed.
- Get invited to local events.
- Spread awareness of your programs.
- Give or seek grant letters of support or contributions.
- Be part of a community of early childhood professionals.

MEET OUR MEMBERS

- Aberdeen School District Preschool Program
- ARC of Grays Harbor
- Behavioral Health Resources (BHR)
- Bezos Academy
- Catholic Community Services
- Child Care Action Council
- CHOICE
- CPWI Coalition - ESD 113
- Dads Move
- DCYF Dept. of Licensing
- DCYF Child Welfare Early Learning Liaison
- DCYF ECEAP (Early Childhood Education and Assistance Program)
- Elma School District
- Grays Harbor Community Foundation
- Grays Harbor College
- Grays Harbor County Public Health
- Greater Grays Harbor, Inc.
- Hoquiam School District
- Lake Quinalt School District - Preschool Program
- Learning to Grow Child Care
- Molina Healthcare
- Montesano School District
- North Beach School District
- Oakville School District
- Save the Children
- South Sound Parent to Parent
- Timberland Regional Library
- Tracy's Tikes Day Care & Preschool
- Washington Elementary Headstart - ESD 113
- Washington Elks Therapy Program for Children
- YMCA of Grays Harbor

Grays Harbor Early Learning Coalition Vision:

All children in Grays Harbor have quality early childhood experiences that promote health and safety, early literacy and parent support and education.

PROVIDER SPOTLIGHT: BUNDLE OF JOY CHILDCARE

I have been a licensed family home childcare for 30 years. I started my home daycare so that I can stay at home while my children were young. I have 3 adult children and 3 beautiful granddaughters that have all got their start in my childcare. I went back to Grays Harbor college at the age of 50 and got my Washington State Early learning Childhood certificates. Best decision I made. This helped me understand better the importance of my work with young children.

With this education I decided to offer a night preschool. We teach on Monday and Wednesday evenings, 5:30 to 7:30 . This is to help out those parents that do not have the option or availability to a day program. We teach a mixed age group of 3- to 5-year-olds. 2025/26 school year will be 4th year. My teaching style is learning through meaningful play. My favorite thing about family childcare is that I make life long friends (family)! Watching the children grow together and still be close friends as adults. I love to see the excitement in a child's face when they learn something new or just figure out the process.



YOU KNOW BEST

If you think your child age birth - three should be crawling, walking or talking, and isn't, please call and schedule a **FREE** evaluation to see if your child qualifies for early support services.

NO physician referral required.

360.352.1126



TU CONOCES A TU NIÑO MEJOR

Si piensas que su niño, en nacimiento hasta 3 años, debería gatear, caminar, o hablar y no lo esta haciendo, por favor llamanos para fijar un evaluación gratis para ver si tu niño califica para servicios de apoyo temprano.

No necesitas seer referido por el dotor. Todas las familias son bienvenidas sin discriminacion de su estatus.

360.462.0362

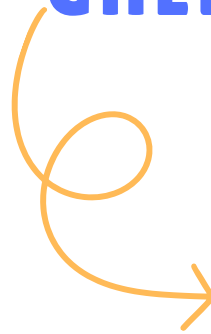


GRAYS HARBOR COLLEGE

Enrollment for the Summer and Fall (2025) quarters at Grays Harbor College is currently underway. To learn more about the **Early Childhood Education** program or to register for classes in the program, please contact Hannah Mechler.



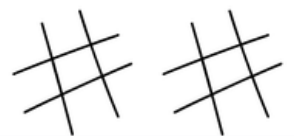
GHEL COLORING PAGE



Know. Go. Provide. Grow.
Saber. Ir. Proveer. Crecer.



RED ROJO
BLUE AZUL
YELLOW AMARILLO
GREEN VERDE
PURPLE MORADO



Coloring pages and crayons are available while supplies last. Connect with us to promote early learning and helpful resources!

- Great for waiting room areas and front lobbies.

ORDER NOW



TIMBERLAND REGIONAL LIBRARY SUMMER READING PROGRAM

Summer Library Program is Here!

ALL ages are invited to join TRL's Summer Library Program. During SLP, the library is a vibrant hub of activity offering engaging programs, captivating books , activities, and prizes for participation!

There's something for everyone to enjoy all summer long!



[LEARN MORE](#)



Because kids
don't come with
instructions.



Text KIDSWA to 274 448 for
FREE parenting tips

Msg & data rates may apply.

@Lantern | www.mylantern.org

ELMA SCHOOL BASED HEALTH CENTER



The Summer Newsletter is
full of helpful resources and
summer events!

[READ MORE](#)





Save the Children

Questions? Call (360)276-8215 Ext 7422
Jasmine.parkins@quinalt.org

A photograph of three diverse children (two girls and one boy) sitting together and smiling. A rainbow is visible in the foreground.

Early Steps to School Success Program

Early Steps to School Success will provide early childhood education services to pregnant families and kindergarten readiness for children ages 0-5 years throughout the community through increased family and community engagement in early learning.

Program Features:

- ✓ Home Visits
- ✓ Maternal child health
- ✓ "Transition to School" Activities
- ✓ Book Bag Exchange
- ✓ Monthly Parent-Child Groups
- ✓ Developmental Screenings
- ✓ Social-emotional, early numeracy, physical/ motor, thinking / cognition, early literacy and language skills

A collage of four circular images showing families and children engaged in various activities: a family sitting on a couch, a father reading to a child, a child playing with blocks, and a woman holding a child's hand.

To enroll in the Early Steps to School Success Program or to find out more information about this exciting new program in your community:

[LEARN MORE](#)



Save the Children®

Please contact Marisol Castillo for any questions

Contact info:

mcastillo@lakequinaltschools.org

Cell: (360)580-8180

Office: (360)288-2414 ext.120



CONNECT, PLAY, LEARN:

RESOURCE CENTER & PLAY GROUP

1st Tuesday of each month

Free Play from 1:30–3:00pm

**@ The Health Department
2109 Sumner Ave in Aberdeen**



FLYER/ENGLISH



FLYER/SPANISH



**A chance for families to find
resources, ask questions, and
enjoy play with peers.**

***FOR ALL KIDDOS BIRTH TO KINDERGARTEN**



**Have Questions?
Contact AHood@graysharbor.us**

What is PAT?

Personal Visits:

Your assigned Parent Educator can come to where you are to address your parenting concerns and talk through your challenges.

Group Connections:

Monthly get together with other families with small children. A time to learn, connect with other parents, and have fun.

Developmental Screenings:

We'll check in during Personal Visits to ensure that possible issues related to health, development, or learning are detected and addressed early.

Resource Network:

We'll help you find and use community resources to help your family reach your goals.

Is it for me?

Parents as Teachers is a helpful resource for those who are:

- expecting a child
- guardians of children ages 0-3
- need support getting their child ready for school

Grays Harbor Parents as Teachers is a free program that matches parents with a trained Parent Educator (PE). They are there to support you, and help you set and reach goals for yourself and your child.

Your PE is a friendly and experienced person who can help you find answers to your questions about pregnancy or parenting, as well as connect your family with local services.

Services are provided for 2 years. Children must be under 3 years old at time of enrollment.



"Parents as Teachers helped me be more confident on my parenting skills and I continue to learn new ones. There is always a new activity and we can always redo them as often as my child is interested in it. The activities have also helped me teach my child new skills."

—Eloisa, PAT participant

Visit ghfamilysupport.org
or call 360-532-8631
to sign up for Grays Harbor's
PAT program today!



FUN AT THE FRIDAY MARKET!



Games, craft activities, new skills, community service and friends all in your town!

2-4 pm on Fridays from June 13 to August 22

Free to attend! No registration necessary!

Join us for a few minutes or a couple hours.

Located at the Elma Chamber of Commerce 222 W Main St

Hosted by the Elevate East County Coalition



Are you a WIC participant? You and your family may be eligible for farmers market benefits!

Each qualifying participant is eligible for \$30 in benefits, with a max of \$90 per family. Benefits can be used at farmers market, farms and farm stores.

Benefits are limited, call your WIC clinic to get benefits added to your card.

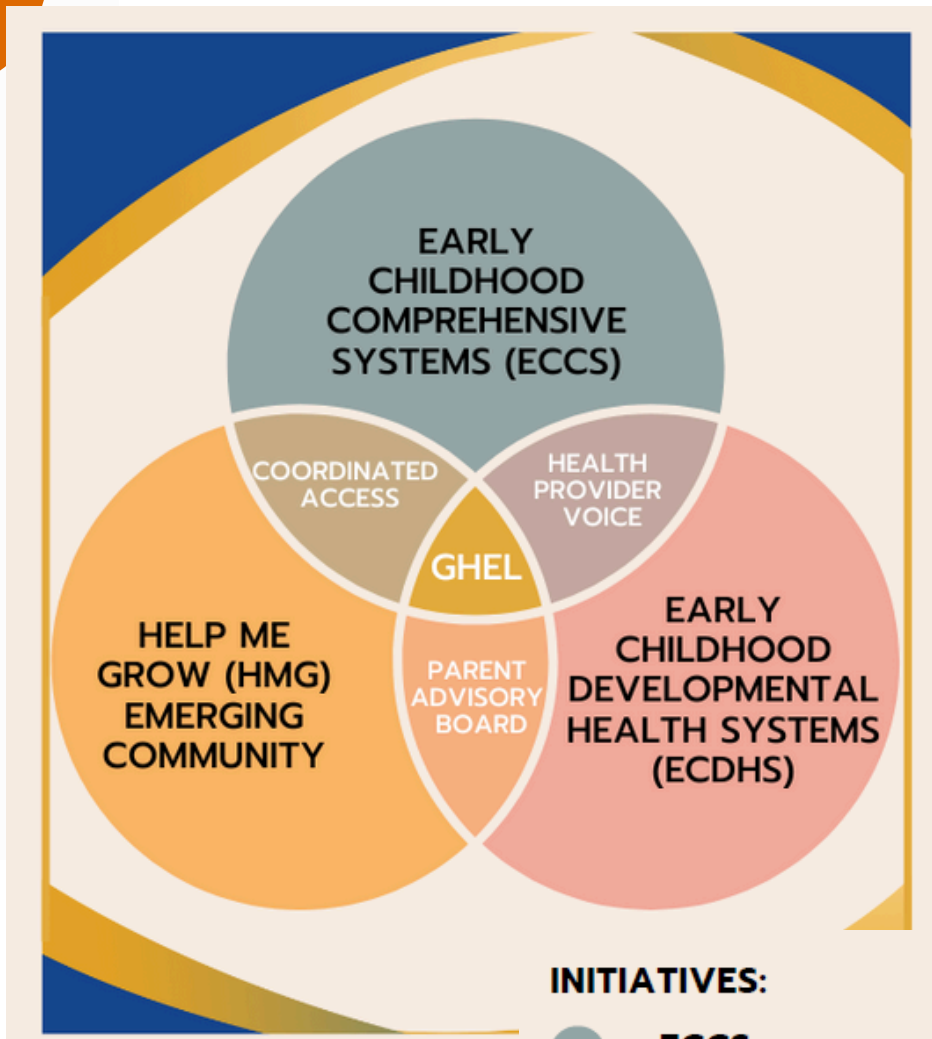
WIC Staff will be at the Aberdeen Farmers Market on June 14 & 28, July 19 and August 16.

GH WIC: 360-500-4041

This institution is an equal opportunity provider.
Washington WIC doesn't discriminate.



GHEL COALITION ACTIVITIES



Stakeholder Group



Get Involved and Invite Others

INITIATIVES:

ECCS

Ensure that information about resources available to children and families is trustworthy and accessible wherever it might help families. Families should be able to readily access the resources they need, when they need them.

HMG

Explore a local HMG model and partnerships specifically focused on the coordinated access point and to improve resource navigation and access at the statewide level.

ECDHS

Increase coordination between early childhood/family support professionals, and healthcare providers with a goal of ensuring equitable access to supports and services for local families.

Know. Go. Provide. Grow.

Raise Awareness:

Early childhood lays the foundation for lifelong learning and success. Which also contributes as an engaged citizen.

KNOW

Support + Action:

When people engage in and support early childhood programs or policies it empowers them to take an active role in our community.

GO

Invest + Contribute:

Providing resources to early childhood program and networks ensures all children have access to quality early learning experiences.

PROVIDE

Thriving Communities:

A focus on early development means a community where every child has the opportunity to thrive, creating a generational impact.

GROW



Join the GHEL Stakeholder group to learn more and support the **KNOW.GO.PROVIDE.GROW.** positive public awareness campaign highlighting early learning and education access.

[LEARN MORE](#)



WWW.FACEBOOK.COM/GRAYSHARBORELC

PAGE 9

EARLY LEARNING NETWORKS



The purpose of **Visions for Early Learning (VEL)** is to provide an intentional space for the organic unfolding of partnerships and connections so that we can respond to emerging community needs effectively. VEL is one of ten regional coalitions in the state joined in **Washington Communities for Children**.



Pointer Power

While you're with your child watch what catches their eye. Point to things you see and say what they are. "There's a black bird and he's flying!" or "The little girl is jumping." Watch where they're looking and say what it is.

Suggested Age

18 months - 2 years

Brainy Background



When you describe what you see, or what your child sees, they're making connections between words and what they mean. Children who know words and what the words mean have a head start on learning.

#194

Learn more at vroom.org

GET INVOLVED...GHEL MEETINGS & WORKGROUPS

If you are interested in participating in one of the workgroups, please contact Molly Leithold, County Coalition Lead to get you connected.

Join OUR MEMBERSHIP MEETINGS

3RD TUESDAY

1:30 - 3:30 PM VIA ZOOM

Contact:

MOLLY LEITHOLD,
GHEL COALITION LEAD

GHEARLYLEARNINGCOALITION@GMAIL.COM

COORDINATED ACCESS

- 4th Wednesday ea. month 3:30-4:30 pm

Click [HERE](#) to submit your program(s) for our resource directory.

