



*Mission: The Grays Harbor Early Learning Coalition promotes early learning as a community priority to ensure success in school, work and life.*

## what we do...

- Develop long-term early learning strategies, annual budgets, and work plans.
- Host and support community training and events.
- Coordinate grant proposals.
- Provide forums for information sharing, partnership, and collaboration.

## Membership is free! Become a member to:

- Network.
- Stay informed.
- Get invited to local events.
- Spread awareness of your programs.
- Give or seek grant letters of support or contributions.
- Be part of a community of early childhood professionals.

## MEET OUR MEMBERS

- Aberdeen School District Preschool Program
- ARC of Grays Harbor
- Behavioral Health Resources (BHR)
- Bezos Academy
- Catholic Community Services
- Child Care Action Council
- CHOICE
- CPWI Coalition - ESD 113
- Dads Move
- DCYF Dept. of Licensing
- DCYF Child Welfare Early Learning Liaison
- DCYF ECEAP (Early Childhood Education and Assistance Program)
- Elma School District
- Grays Harbor Community Foundation
- Grays Harbor College
- Grays Harbor County Public Health
- Greater Grays Harbor, Inc.
- Hoquiam School District
- Lake Quinalt School District - Preschool Program
- Learning to Grow Child Care
- Molina Healthcare
- Montesano School District
- North Beach School District
- Oakville School District
- Save the Children
- South Sound Parent to Parent
- Timberland Regional Library
- Tracy's Tikes Day Care & Preschool
- Washington Elementary Headstart - ESD 113
- Washington Elks Therapy Program for Children
- YMCA of Grays Harbor

## **Grays Harbor Early Learning Coalition Vision:**

*All children in Grays Harbor have quality early childhood experiences that promote health and safety, early literacy and parent support and education.*

# **PROVIDER SPOTLIGHT: Sarah Teveliet-Channel ECEAP Preschool Coordinator**

### **Years in Early Learning:**

I have been involved in early learning for 25 years which includes:

- Student Volunteer - Bobcat Hall at Hopkins
- Early Learning Center Director - Everett YMCA
- Preschool Office Coordinator - Aberdeen ECEAP
- Preschool Teacher - Central Park Elementary
- ECEAP Preschool Coordinator

### **Favorite Part of Working in Early Learning:**

I enjoy welcoming families to an early learning environment. I love being a part of their first formal early learning education and making a place for kids to love learning!

### **Favorite Children's Book:**

*Make Way for Ducklings* - I have my mom's copy from the 50's that my grandma gave me when I was little. When I went to Boston I had my picture taken with the bronze *Make Way for Ducklings* statues.

### **Favorite Children's Song:**

"Head-Shoulders-Knees and Toes" - It is easy to teach and you can sing it anywhere. I also change the body parts and speed it up and slow it down. "Baby Mine" from *Dumbo* is also special. I would sing this with my daughter when she was young.





# SOUTH SOUND PARENT TO PARENT

"If I'm concerned about my child's development, who should I call?"



Research shows that most learning happens in the first 3 years. If you think your child, age birth - three, should be crawling, walking or talking and isn't, please contact South Sound Parent to Parent and schedule a FREE evaluation to see if your child qualifies for early support services. **NO Physician referral required**

For more information or to schedule an evaluation, please contact us at: [360.352.1126](tel:360.352.1126) / [www.ssp2p.org](http://www.ssp2p.org)



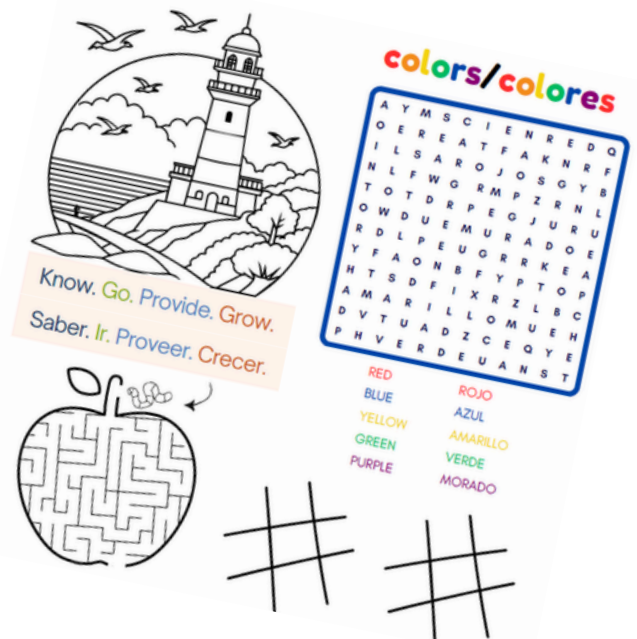
*Proudly serving families in Grays Harbor, S. Mason & Thurston Counties.*

## GHEL COLORING PAGE

Coloring pages and crayons are available while supplies last. Connect with us to promote early learning and helpful resources!

- Great for waiting room areas and front lobbies.

**ORDER NOW**



# LANTERN (PREVIOUSLY BRIGHT BY TEXT)

**lantern**

Because kids don't come with instructions.

We know parenting can be overwhelming. We're here to help, one text message at a time.



**SUBMIT NOW**



Lantern is a free texting service where Grays Harbor families get reminders and information about free or low cost events and resources around the county. They get short texts about things like library events, play groups, health fairs, etc.

If you'd like to promote your free or low cost event to local families, you can fill out our google form. In order to guarantee that your event or resource is promoted, please submit at least 2 weeks prior to when you would like the message sent out.

## GRAYS HARBOR CONNECTING CONNECTORS

On April 21st, 33 resource navigators representing 22 early learning organizations gathered for the Connecting Connectors event, an opportunity to strengthen partnerships and deepen knowledge of supports available to families with young children in Grays Harbor. Save the date for a Connecting Connectors 2.0 this Fall!



# CHILD CARE ACTION COUNCIL LIFE JACKET LOANER CABINETS



Grays Harbor County

# LIFE JACKET LOANER CABINETS

**Life Jacket Loaner Cabinets are now available  
at five WDFW Boat Launches in Grays Harbor County!**

Spending time on the water is a great way for families to have fun - but safety comes first. These life jacket loaner cabinets make it easy for everyone to stay safe while boating, kayaking, paddle boarding, fishing, or playing near the water.

- **Failor Lake**
- **South Montesano**
- **West Satsop**
- **John's River**
- **Double Bridges**

Borrow a life jacket from the cabinet

Wear it while enjoying the water

Return it when you're done so others can use it

[ccacwa.org/life-jacket-loaner-cabinets/](http://ccacwa.org/life-jacket-loaner-cabinets/)

Partners



Enrollment for the Summer and Fall (2026) quarters at Grays Harbor College is currently underway. To learn more about the Early Childhood Education program or to register for classes in the program, please contact Hannah Mechler ([hannah.mechler@ghc.edu](mailto:hannah.mechler@ghc.edu))



# TIMBERLAND REGIONAL LIBRARY SUMMER READING PROGRAM

JUNE 1 - AUGUST 31, 2026

Timberland Regional LIBRARY



## HOW TO PARTICIPATE:

- VISIT ANY TRL LIBRARY TO SIGN UP
- COMPLETE SLP BINGO ACTIVITIES
- RETURN COMPLETED BINGO SHEET TO YOUR LIBRARY TO COLLECT PRIZE PASSES FOR YOUTH (WHILE SUPPLIES LAST)

ALL AGES  
GET A  
FREE BOOK  
JUST FOR  
SIGNING UP!

## PRIZES:



LOCAL COUPONS MAY BE AVAILABLE TO ALL AGES; AVAILABILITY VARIES BY LIBRARY. ASK YOUR LIBRARIAN FOR DETAILS!

SPANISH FLYER



# THE ARC OF GRAYS HARBOR



PARENT to PARENT

Third  
Thursday of  
each month

11:00am

You are invited  
to our

## Parent MEETING

The Parent to Parent Support Program provides emotional support and information to families raising children with special needs and/or disabilities.



**New Facilitators**  
Jeff and Marsha  
Meeks

Location:  
The Arc Office  
523 W 1<sup>st</sup> Street  
Aberdeen



**JOIN NOW**

(360)537-7000  
[www.arcgh.org](http://www.arcgh.org)



# ELEVATE EAST COUNTY

## *Fun at the Friday Market!*



Games, craft activities, new skills, community service and friends all in your town!

2-4 pm on Fridays from June 26 to August 21

Free to attend! No registration necessary!

Join us for a few minutes or a couple hours.

Located at the Elma Chamber of Commerce 222 W Main St

Hosted by the Elevate East County Coalition



# CONNECT, PLAY, LEARN:

## RESOURCE CENTER & PLAY GROUP

**1st Tuesday of each month**

**Free Play from 1:30–3:00pm**

**@ The Health Department  
2109 Sumner Ave in Aberdeen**



**FLYER**



**A chance for families to find  
resources, ask questions, and  
enjoy play with peers.**

**\*FOR ALL KIDDOS BIRTH TO KINDERGARTEN**



**Have Questions?  
Contact AHood@graysharbor.us**

### What is PAT?

#### Personal Visits:

Your assigned Parent Educator can come to where you are to address your parenting concerns and talk through your challenges.

#### Group Connections:

Monthly get together with other families with small children. A time to learn, connect with other parents, and have fun.

#### Developmental Screenings:

We'll check in during Personal Visits to ensure that possible issues related to health, development, or learning are detected and addressed early.

#### Resource Network:

We'll help you find and use community resources to help your family reach your goals.

### Is it for me?

Parents as Teachers is a helpful resource for those who are:

- expecting a child
- guardians of children ages 0-3
- need support getting their child ready for school

Grays Harbor Parents as Teachers is a free program that matches parents with a trained Parent Educator (PE). They are there to support you, and help you set and reach goals for yourself and your child.

Your PE is a friendly and experienced person who can help you find answers to your questions about pregnancy or parenting, as well as connect your family with local services.

Services are provided for 2 years. Children must be under 3 years old at time of enrollment.



"Parents as Teachers helped me be more confident on my parenting skills and I continue to learn new ones. There is always a new activity and we can always redo them as often as my child is interested in it. The activities have also helped me teach my child new skills."

-Eloisa, PAT participant

Visit [ghfamilysupport.org](http://ghfamilysupport.org)  
or call 360-532-8631  
to sign up for Grays Harbor's  
PAT program today!



# DISPUTE RESOLUTION CENTER RESOTRATIVE SUMMMER BASH

HOSTED BY:  DISPUTE RESOLUTION CENTER  
OF GRAYS HARBOR & PACIFIC COUNTIES

SPONSORED BY:  INATAI FOUNDATION

**DRC's RESTORATIVE  
Summer  
BASH**

*CATCH A WAVE WITH US!*

SATURDAY  
**JUNE 27, 2026**  
12 PM - 3 PM - EVENTS ON EMERSON

FEATURING:  
LUNCH FROM ALOHA ALABAMA  
LIVE MUSIC BY THE JACKED LORDS  
+ RAFFLES, ALL-AGES ACTIVITIES, DRC SWAG

 FREE TICKETS AVAILABLE HERE!  
[WWW.DRCGHP.ORG/EVENTS](http://WWW.DRCGHP.ORG/EVENTS)  
(360) 532-8950

LES INVITA:  DISPUTE RESOLUTION CENTER  
OF GRAYS HARBOR & PACIFIC COUNTIES

PATROCINADO POR:  INATAI FOUNDATION

**CELEBRACIÓN de  
Verano  
DEL DRC**

*¡SÚBETE A LA OLA COMUNITARIA!*

SÁBADO  
**27 DE JUNIO**  
12 PM - 3 PM - EVENTS ON EMERSON

ALMUERZO DE ALOHA ALABAMA  
MÚSICA EN VIVO DE THE JACKED LORDS  
+ RIFAS, SORPRESITAS, ACTIVIDADES PARA TODAS LAS EDADES

 ENTRADAS GRATIS DISPONIBLES AQUÍ  
[WWW.DRCGHP.ORG/EVENTS](http://WWW.DRCGHP.ORG/EVENTS)  
(360) 532-8950

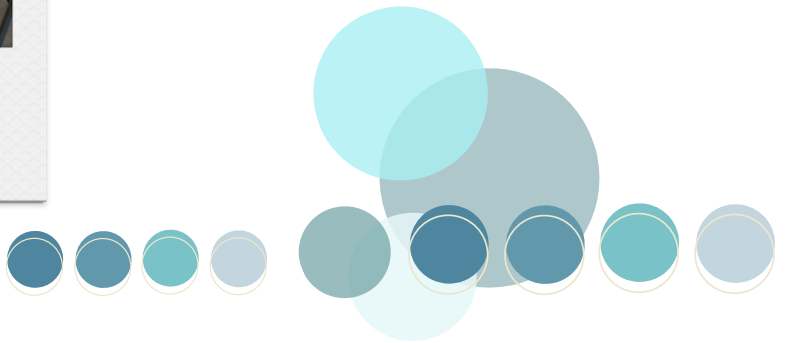
## SMART START CONFERENCE

Erin Schreiber and Molly Leithold joined members of the Within Reach Washington Team and Zero to Three National Team in Greensboro, NC to share the work they have done to support the Early Childhood Developmental Health Systems Grant.



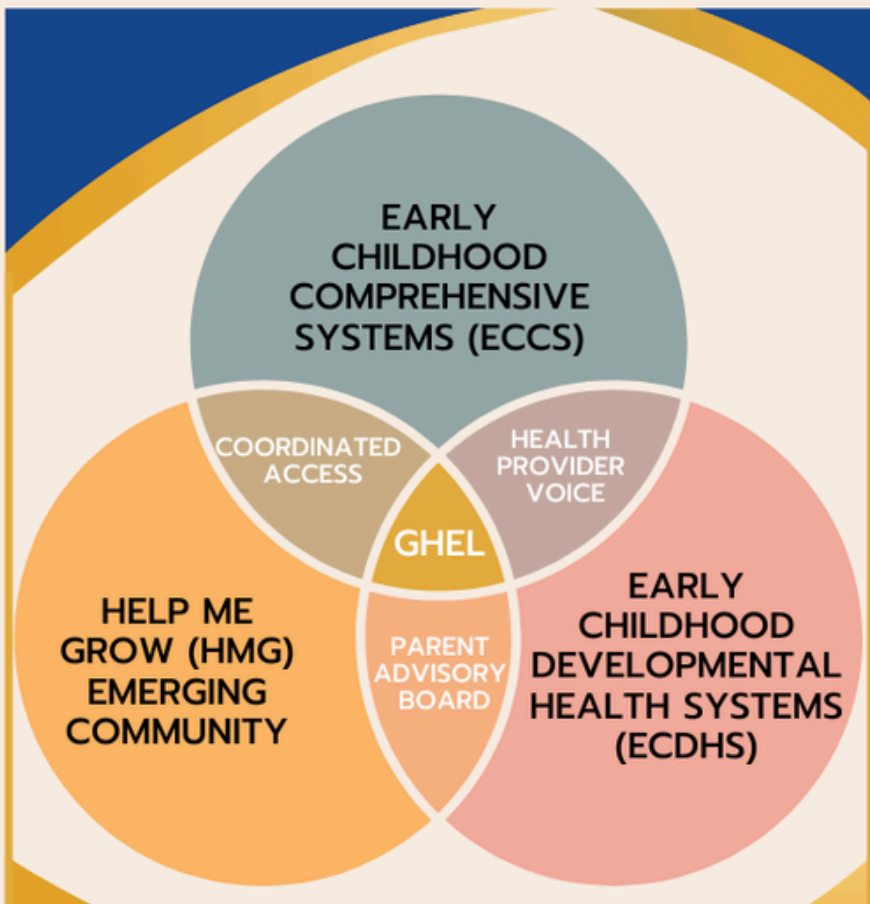
# EARLY LEARNING EXPO RECAP

The 3rd Annual GHREL Early Learning Expo was held on April 30th at the Elma Fairgrounds. 25 participants attended and shared with families the resources their organization provides.



Erin Mountin, a GHREL member, entertained kids as Eddie the Eagle

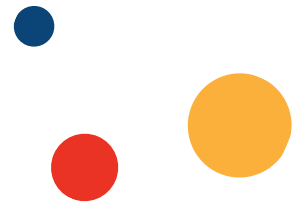
# GHEL COALITION ACTIVITIES



Stakeholder Group



Get Involved and Invite Others



## INITIATIVES:



### ECCS

Ensure that information about resources available to children and families is trustworthy and accessible wherever it might help families. Families should be able to readily access the resources they need, when they need them.



### HMG

Explore a local HMG model and partnerships specifically focused on the coordinated access point and to improve resource navigation and access at the statewide level.



### ECDHS

Increase coordination between early childhood/family support professionals, and healthcare providers with a goal of ensuring equitable access to supports and services for local families.



# St. Mary School Early Learning Program Now with an All-Day Option

Preschool and PreK Classes enrolling now for the 2026-27 school year



Preschool (3 yrs. old)  
and PreK (4 yrs. old)  
Birth date cut-off  
is August 31



## 3 Enrollment Options

### Option 1

All-Day Preschool / PreK Program  
8 am - 2:45 pm Monday - Friday  
**\$8,200/yr. (\$820/mo.)\***

### Option 2

All-Day Preschool / PreK Program plus After School Care  
8 am - (up to) 5:15 pm Monday - Friday  
**\$10,850/yr. (\$1,085/mo.)\***

### Option 3

Half-Day Preschool / PreK Program  
8 am - 11:30 am Monday - Friday  
**\$4,100/yr. (\$410/mo.)\***

*\*All options follow the Sep.- June St. Mary School calendar. Tuition is based on ten monthly payments.*

**Now Accepting  
Washington State  
Childcare Subsidy**

We can provide  
details and help  
you apply

**SPACE IS LIMITED  
INQUIRE NOW  
20 Student Maximum  
Enrollment**

## St. Mary School

518 North H St., Aberdeen  
360-532-1230

[www.saintmaryschool.org](http://www.saintmaryschool.org)

Call or visit our website for more information

Scan QR Code  
for webpage



# Know. Go. Provide. Grow.

## Raise Awareness:

Early childhood lays the foundation for lifelong learning and success. Which also contributes as an engaged citizen.

# KNOW

## Support + Action:

When people engage in and support early childhood programs or policies it empowers them to take an active role in our community.

# GO

## Invest + Contribute:

Providing resources to early childhood program and networks ensures all children have access to quality early learning experiences.

# PROVIDE

## Thriving Communities:

A focus on early development means a community where every child has the opportunity to thrive, creating a generational impact.

# GROW



Join the GHEL Stakeholder group to learn more and support the **KNOW.GO.PROVIDE.GROW.** positive public awareness campaign highlighting early learning and education access.

[LEARN MORE](#)



## EARLY LEARNING NETWORKS



The purpose of **Visions for Early Learning (VEL)** is to provide an intentional space for the organic unfolding of partnerships and connections so that we can respond to emerging community needs effectively. VEL is one of ten regional coalitions in the state joined in **Washington Communities for Children**.

## GET INVOLVED...GH EL MEETINGS & WORKGROUPS

### ECDHS STAKEHOLDER GROUP MID GRANT REPORT



The Grays Harbor ECDHS (Early Childhood Developmental Health Systems) stakeholder group meets virtually each month. The group is currently focused on creating a strategic plan for the implementation roll out of Help Me Grow (HMG) Grays Harbor! [Learn more](#) about what they've accomplished so far.

Join OUR MEMBERSHIP MEETINGS

3RD TUESDAY

1:30 - 3:30 PM VIA ZOOM

Contact:

MOLLY LEITHOLD,

GH EL COALITION LEAD

[GHEARLYLEARNINGCOALITION@GMAIL.COM](mailto:GHEARLYLEARNINGCOALITION@GMAIL.COM)

### COORDINATED ACCESS

- 4th Wednesday ea. month from 3:30-4:30 pm (virtually)

Please connect with Molly if you are interested in participating - all are welcome and you are not obligated to attend consistently.

- GH EL member meetings do NOT meet in July and August

